



PORTAL 2 VIVIENDA 15

3 DORMITORIOS

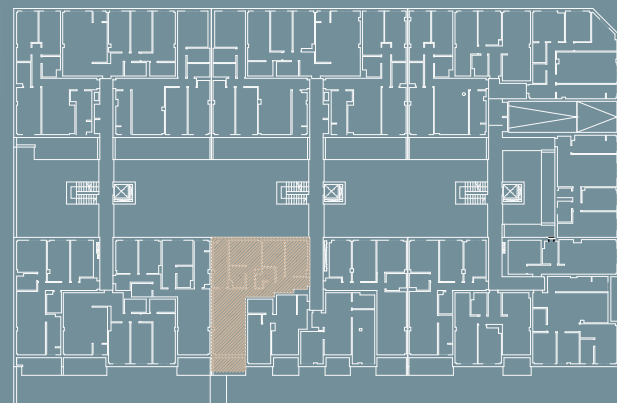
SUPERFICIES:

| | |
|---------------------------|-----------------------|
| - SUP. ÚTIL : | 84,67 m ² |
| - SUP. TERRAZA : | 5,83 m ² |
| - SUP. CONSTRUIDA TOTAL : | 97,90 m ² |
| - SUP. CONSTRUIDA TOTAL : | 105,21 m ² |

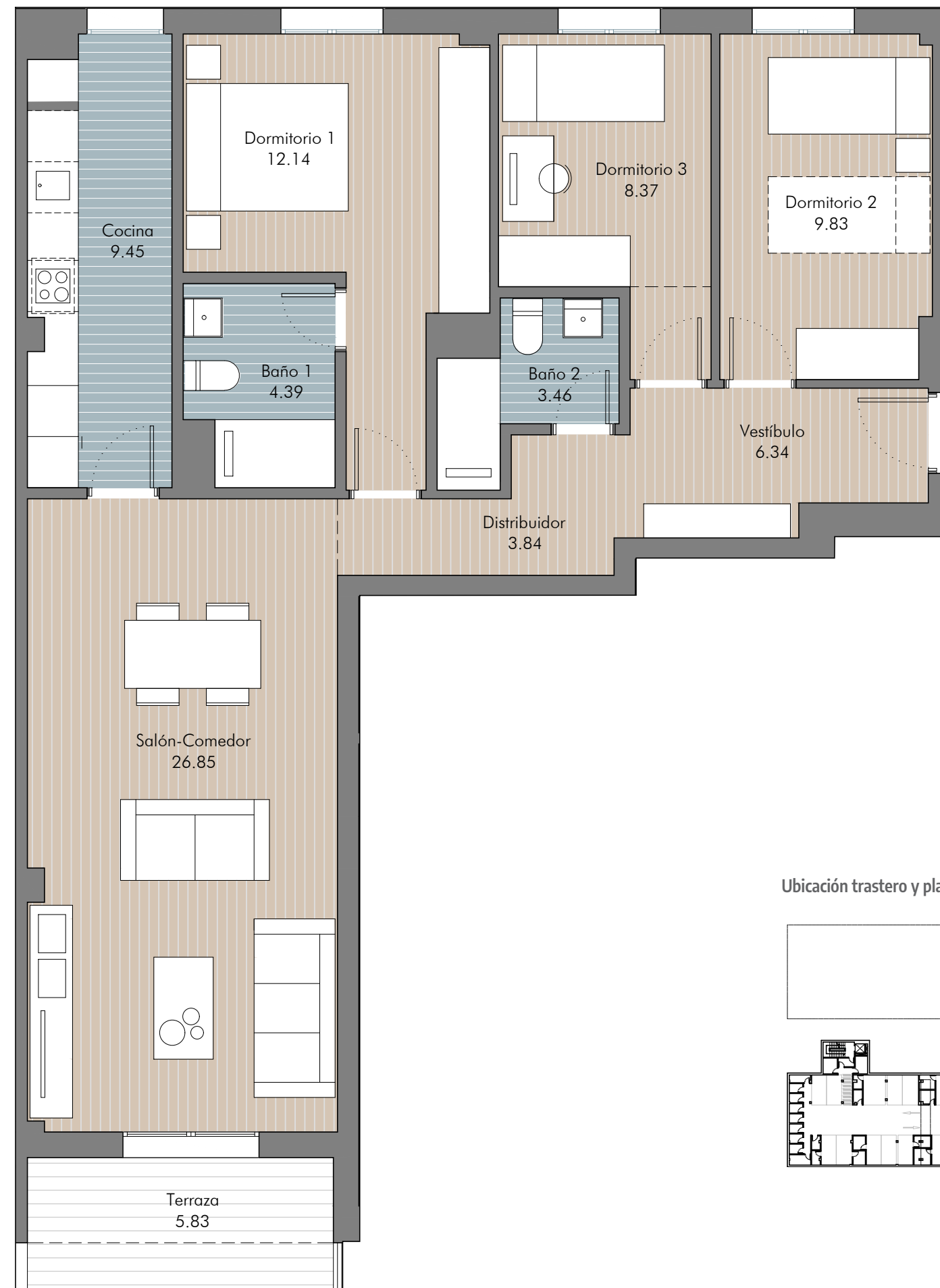
(Incl. p/p Z.Z.C.C.)

ANEXOS:

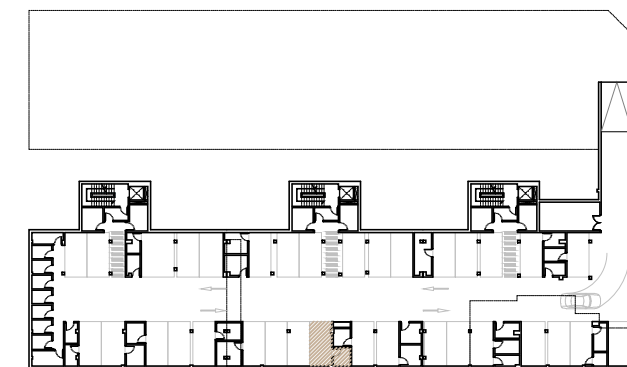
| | |
|----------------|----------------------|
| - PLAZA 50: | 12,45 m ² |
| - TRASTERO 31: | 3,91 m ² |



PLANTA PRIMERA



Ubicación trastero y plaza de garaje



escala gráfica 1:60

