



## PORTAL 1 VIVIENDA 29

3 DORMITORIOS

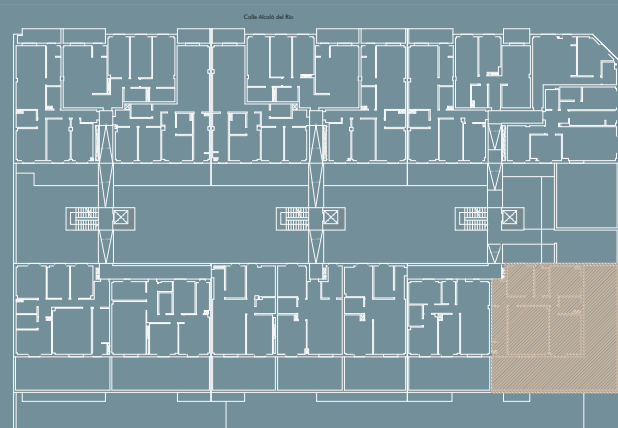
### SUPERFICIES:

|                           |                       |
|---------------------------|-----------------------|
| - SUP. ÚTIL :             | 90,46 m <sup>2</sup>  |
| - SUP. TERRAZA :          | 91,24 m <sup>2</sup>  |
| - SUP. CONSTRUIDA TOTAL : | 106,76 m <sup>2</sup> |
| - SUP. CONSTRUIDA TOTAL : | 123,12 m <sup>2</sup> |

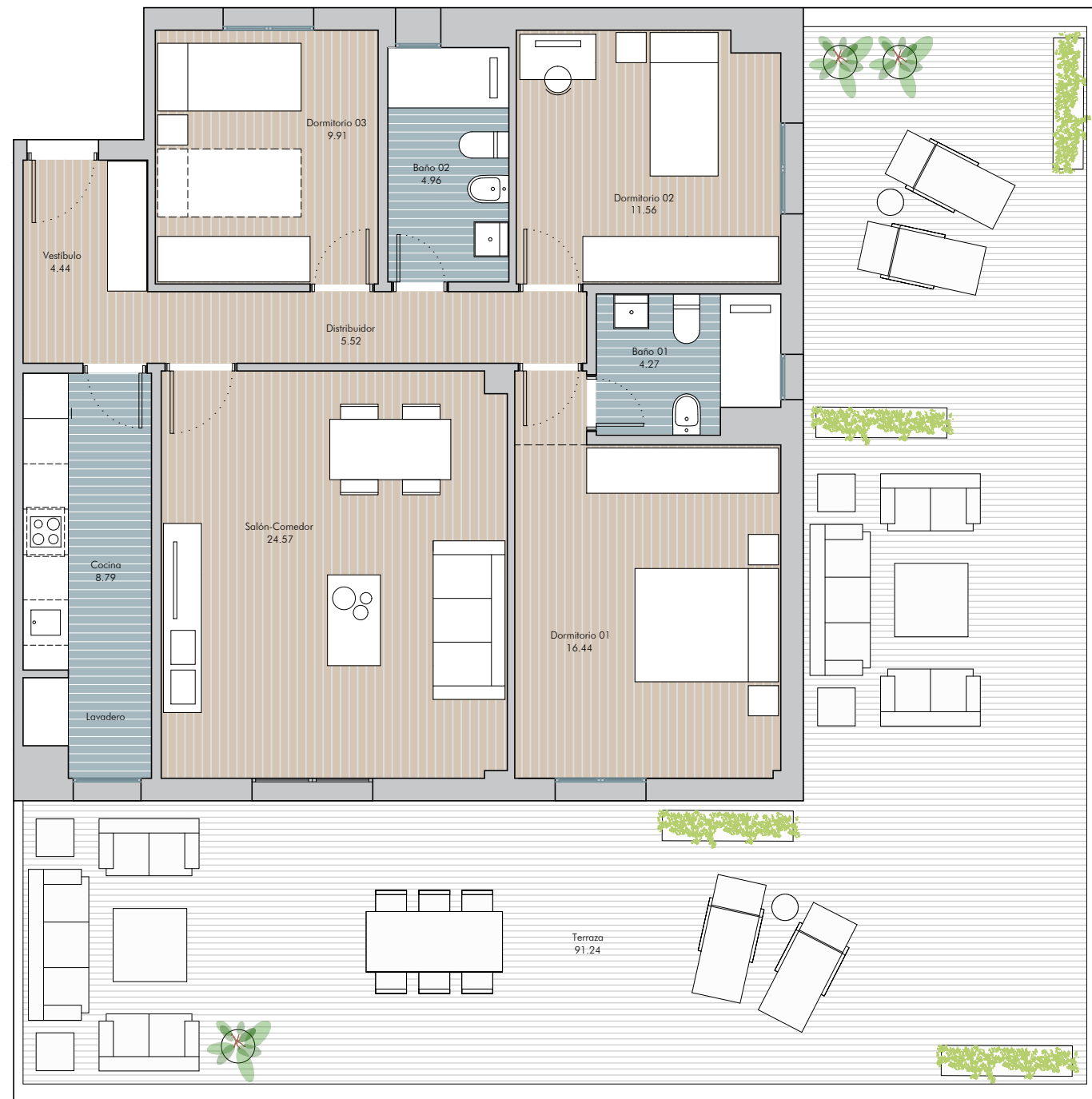
(Incl. p/p Z.Z.C.C.)

### ANEXOS:

|                 |                      |
|-----------------|----------------------|
| - PLAZA 57:     | 12,49 m <sup>2</sup> |
| - TRASTERO 26 : | 6,97 m <sup>2</sup>  |



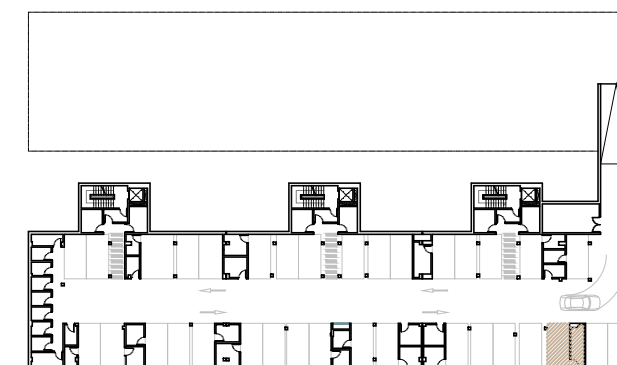
PLANTA ÁTICO



### Opción cocina abierta y 4 dormitorios



### Ubicación trastero y plaza de garaje



escala gráfica 1:80